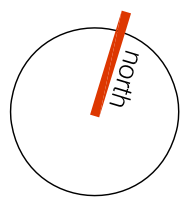


LANDSCAPE PLAN:lower ground & ground floor-west scale: 1:100



754-774 Canterbury Road, BELMORE NSW

Do not scale off this drawing. Use figured dimensions only. Resolve discrepancies with The Landscape Architect before proceeding. Copyright of this drawing and designs executed remains vested in CANVAS landscape architects. Copyright remains with the Landscape Architects. Reproduction of this document is not permitted without the approval of the Landscape Architect. Contractors to verify site conditions and dimensions.

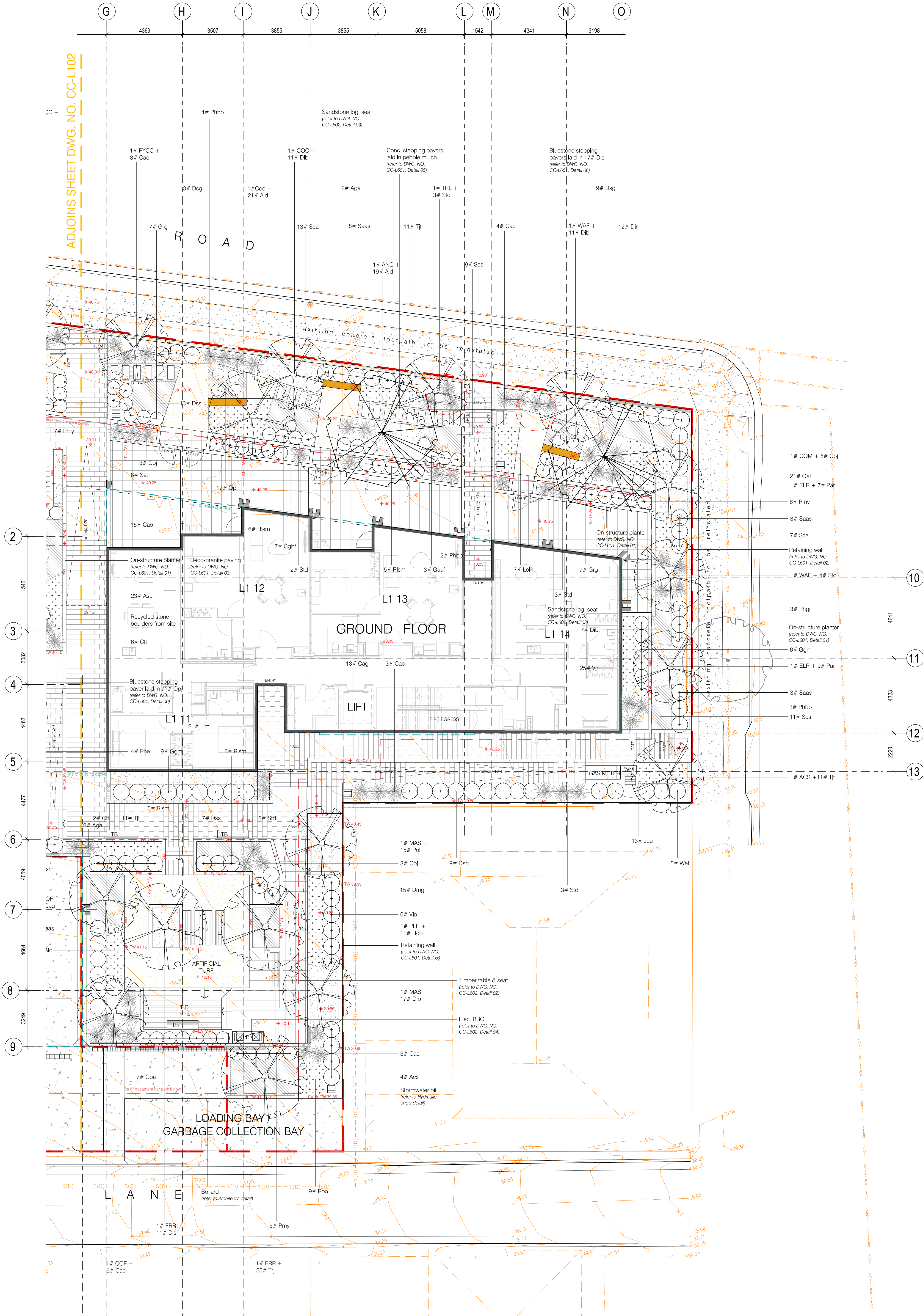


dwg title
landscape plan:
lower ground &
ground floor-west

scale: 1:100 @ a1
dwg no.: CC-L102
Client:
STATEWIDE
PLANNING

revision	date
P co-ordination	14/10/2022
A s.4.55 submission	02/02/2023

ADJOINS SHEET DWG. NO. CC-L102



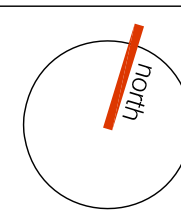
LANDSCAPE PLAN: ground floor-east

scale: 1:100

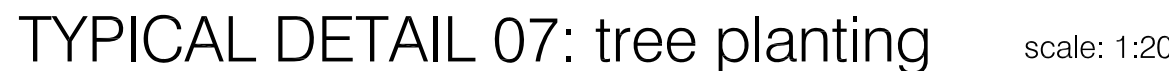
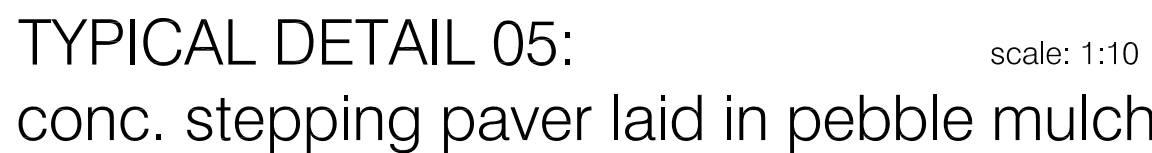
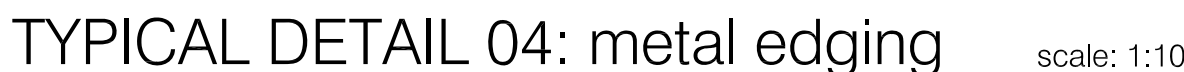
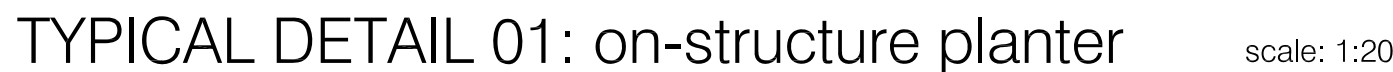


754-774 Canterbury Road, BELMORE NSW

Do not scale off this drawing. Use figured dimensions only. Resolve discrepancies with The Landscape Architect before proceeding. Copyright of this drawing and designs executed remains vested in CANVAS landscape architects. Copyright remains with the Landscape Architects. Reproduction of this document is not permitted without the approval of the Landscape Architect. Contractors to verify site conditions and dimensions.



dwg title	scale:	revision	date
landscape plan: ground floor-east	1:100 @ a1 dwg no.: CC-L103 Client: STATEWIDE PLANNING	P co-ordination A s.4.55 submission	14/10/2022 02/02/2023





TYPICAL DETAIL 01: timber bench

Details

- Product Name: eveleigh bench or similar approved
- Product Code: BCH128
- Battens: spotted gum
- Frame: powered coated black sky
- Fixing: subsurface
- Manufacturer: StraBe



TYPICAL DETAIL 02: timber table

Details

- Product Name: eveleigh table setting or similar approved
- Product Code: TBL128
- Battens: spotted gum
- Frame: powered coated black sky
- Fixing: subsurface
- Manufacturer: StraBe



TYPICAL DETAIL 03: sandstone log seat

Details

- Product Name: sandstone log or similar approved
- Colour: natural
- Finish: wheel sawn A grade
- Size: cut to size as indicated
- Supplier: sandstone hub



TYPICAL DETAIL 04: electric BBQ

Details

- Product Name: Babeco Double Series 2 or similar approved
- Size: 1905x805x905mm H
- Manufacturer: unisite



TYPICAL DETAIL 05: sandstone log seat

Details

- Product Name:diabolo baby slide or similar approved
- Product Code: J38700
- Manufacturer: proludic

Do not scale off this drawing. Use figured dimensions only. Resolve discrepancies with The Landscape Architect before proceeding. Copyright of this drawing and designs executed remains vested in CANVAS landscape architects.

GENERAL NOTES

1. SERVICES
Before landscape work is commenced, Landscape contractor is to establish the positions of all above & below service lines and protect them from damage during construction.
2. DIAL BEFORE YOU DIG
Before landscape work is commenced, Landscape contractor is to call 1100 to check the existing underground service lines and protect them from damage during construction.
3. WEED ERADICATION
Eradicate all weeds from planting areas prior to planting operations. Apply "Roundup" or equivalent glyphosate herbicide to all weeds to manufacturer's recommendations and rates, two weeks prior to commencement of soil works. Ensure that all weed growth has failed prior to commencement of soil works and reapply herbicide as necessary. Remove all weed material from site.
4. SETOUT
All setout to be approved by Landscape Architect prior to construction. Refer to Architects' and Engineers' Drawings for precise information regarding paving, finished levels, roadworks, fences and drainage details.
5. SOIL PREPARATION
Site Topsoil: Provide sample of site topsoil for testing by soil testing laboratory. Allow for amelioration of site topsoil as recommended by the results of soil testing for the improvement of plant growth & to adjust the soil to achieve appropriate planting medium for successful plant growth.
Excavate all garden beds to bring the subsoil to at least 300mm below finished design levels. Do not excavate within the drip line of trees to be retained. Cultivate the site subsoil to a further depth of 100mm. Remove stones exceeding 25mm, clods of earth of 50mm, and weeds, rubbish or other deleterious material brought to the surface during cultivation. Do not disturb services or tree roots, if necessary cultivate these areas by hand. During cultivation, thoroughly mix in materials required to be incorporated into subsoil, as recommended in the soil testing results and to manufacturer's recommendations. Trim the surface to design levels after cultivation.
Tree Planting: Excavate tree pit as shown on the detail.
Backfill around rootball with approved soil mix, refer to detail.
6. NATURAL TURF
Install Sir Walter Buffalo or approved equivalent turf to all road verges and nominated areas.
7. ON GROUND PLANTING
A. Soil Mix type A: ANL 'Premium Garden Mix' (mixture of soil, double washed sand, graded ash, composted organics & coco peat)
B. Soil Mix type B: site top soil with additive if required.
8. ROOT BARRIER
Install 'Treemax RootWall' root barrier around rootball,high-density polyethylene (0.7mm thk) or similar approved.
Root barrier is to be installed as per manufacture's specifications.
9. MULCHING ON GARDEN BED AREA
At completion of planting all planting beds shall be mulched with 75mm depth A.N.L. Forest Blend or similar.
10. FERTILISER
All planting areas to be fertilised with 9 month 'NPK' slow release fertiliser.
11. DRAINAGE
Refer to Hydraulic Engineers' drawings for drainage details. Notify Superintendent of all soil or drainage conditions encountered during planting operations which the Contractor considers detrimental to plant growth. Include a proposal for the correction for approval before proceeding with work.
12. STAKING
Trees shall be tied to stake with jute webbing tied in a figure of eight pattern and stapled to stakes.
13. PAVING MATERIAL
All paving materials to have slip resistance to comply with AS 4586.
Refer to Architect's details.
14. ON-STRUCTURE PLANTER
The raised on structure planters shall be constructed with masonry blockwork with rendered & painted finish.
15. MASONRY RETAINING WALL
All retaining walls are to have agricultural drainage lines with free washed blue metal around to connect to street stormwater and rendered & pained finish.
Refer to Structure Eng's specification & details and finishes & colours to Architect's details.
16. BOUNDARY FENCE
Refer to Architect's details.
17. PEBBLE MULCH
100mm deep A.N.L. 30-40mm dia. river gravels to be laid in nominated area shown on the landscape plan.
18. TIMBER EDGING
A. Install hardwood timber edging to tree pits as shown on drawings, to the location shown on the drawings. Edging shall be flush with adjacent turf levels.
B. Type: 25 x 100mm hardwood timber
C. Fixing: 450 x 50 x 50mm hardwood timber pegs at minimum 1m centres, and at all corners & joins. Pegs to be secured to edging by two galvanised screws per peg.
19. ABOVE GROUND OSD BASIN & SW PITS
Refer to Hydraulic Eng's specification & details.
20. IRRIGATION
Provide a water-efficient irrigation system with an above ground dripper system to all landscaped areas. Two taps per dwelling are connected tpa pump and the rainwater tank. Connect to the rainwater tanks, with a backup connection to the mains water supply, in accordance with current Sydney Water requirements. The contractor shall be responsible for securing all necessary inspections and approvals by Authorities.
All standards of workmanship and materials used shall conform to the Australian Standards for that work, including all Sydney Water requirements.
Co-ordination of the irrigation system shall be included with other services throughout the site. Provide heads which maintain a dripper flow of 2 liters per hour, during watering operation and which are vandal - resistant. Provide a 8-12 Station automatic controller in a waterproof, lockable, metal box to the location to be advised.
Supply a semi automatic watering system using "TORO IRRIGATION SYSTEM" or similar approved, with micro-jet sprinkler heads and low density, rubber modified polypropylene reticulation, to include filters, bends junctions, ends and other ancillary equipment. The landscape contractor shall nominate his source of supply for the watering system and obtain approval from the superintendent before placing orders for equipment or supply.
A schematic plan of the proposed irrigation system is to be prepared by the contractor, showing solenoids, pipe diameters, and all nozzle and trickle attachment types (including spray/head angle), for review by the superintendent prior to installation.